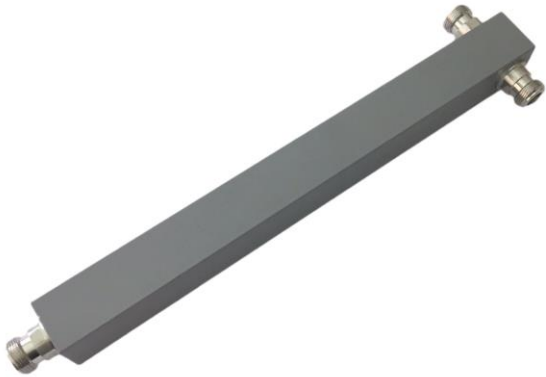


2-Way 340-2700MHz, 300W Power Splitter w/ N-Female Connector



Ventev's offering of 340 – 2700 MHz, 2-way power splitters are designed to cover a wide frequency band with low insertion loss. The splitters are rated for indoor and outdoor applications and include N-Female connectors. They are designed to provide coverage from 2G-4G/LTE and public safety applications

Every Ventev splitter is covered by Ventev's two-year TerraNet warranty program.

For more information or to purchase, contact Ventev: 800.851.4965 or sales@ventev.com.

Technical and Mechanical Specs

Tessco Sku	281013
Model No.	VEN-2W-RPD-NF
Freq (MHz)	340-2700 MHz
Split Loss (dB)	3.0
VSWR	≤1.3
PIM (dBc)	≤-160dBc @2*43dBm (698-2700)
Insertion Loss (dB)	≤0.25
Total Input Power (W)	300
Impedance (ohm)	50
Connector	N-female
Temp (deg)	-25 to 65°C
Application	Indoor or Outdoor, IP65
Dimension HxWxD(in)	11.0 x 1.0 x 1.0
Weight (lbs)	1.15 (40Pcs/box,48.50)
Packing Size (in)	13.4 x 3.0 x 1.6, 1PCS 15.6 x 14.6 x13.4, 40 Pcs/box

2-Way 340-2700MHz, 300W Power Splitter w/ N-Female Connector

Mechanical Drawing (in)

